

Christian Health Association of Ghana (CHAG)

FEEDBACK ON SELECTED HEALTH SERVICE PERFORMANCE INDICATORS

2013



Christian Health Association of Ghana (CHAG)

**FEEDBACK ON SELECTED
HEALTH SERVICE PERFORMANCE
INDICATORS**

2013



Christian Health
Association of Ghana
(CHAG)

**Feedback on Selected
Health Service Performance
Indicators**



JULY 2013

Table of Contents

Foreword	III
Selected Performance Indicators.....	1
1. Data Submission Rate by Member Institutions	1
2. Health Outcome Indicators.....	2
2.1 Institutional Maternal Mortality	3
2.2 Institutional Infant Mortality	4
2.3 Institutional Still Birth Rate	5
2.4 Institutional Under-Five Mortality Rate	6
2.5 Institutional Crude Death Rate	7
3. Health Training Institutions Pass Rate	8



Foreword

This document, Feedback on 2012 Health Outcome Performance, is being produced by the CHAG secretariat to complete the loop of information management and use. Feedback is the weakest part of the data management systems in general and at all levels and within CHAG. The document provides a snapshot on the outcome performance of CHAG in 2012, with comparative data from previous years. It gives information on the facilities that submitted 2012 minimum service data to the secretariat and the extent to which the organization is supporting the achievement of national health outcomes.

The document is intended to be used by facilities as reference for them to assess their own performance and be motivated to improve. It is envisaged that this document will assist us to continue to improve on the performance of our health care delivery.

The CHAG secretariat has been making efforts to collect and accurately collate data from members. Data for the years 2010, 2011 and 2012 is currently available and has enabled the preparation of trend data for analysis and informed decision making. 80% and 78% of institutions reported in 2010 and 2011 respectively as against 84% in 2012. In general there is evidence improved in health outcomes by the network.

Dr. Gilbert Buckle
Executive Director
July, 2013



Selected Performance Indicators

1. Data Submission Rate by Member Institutions

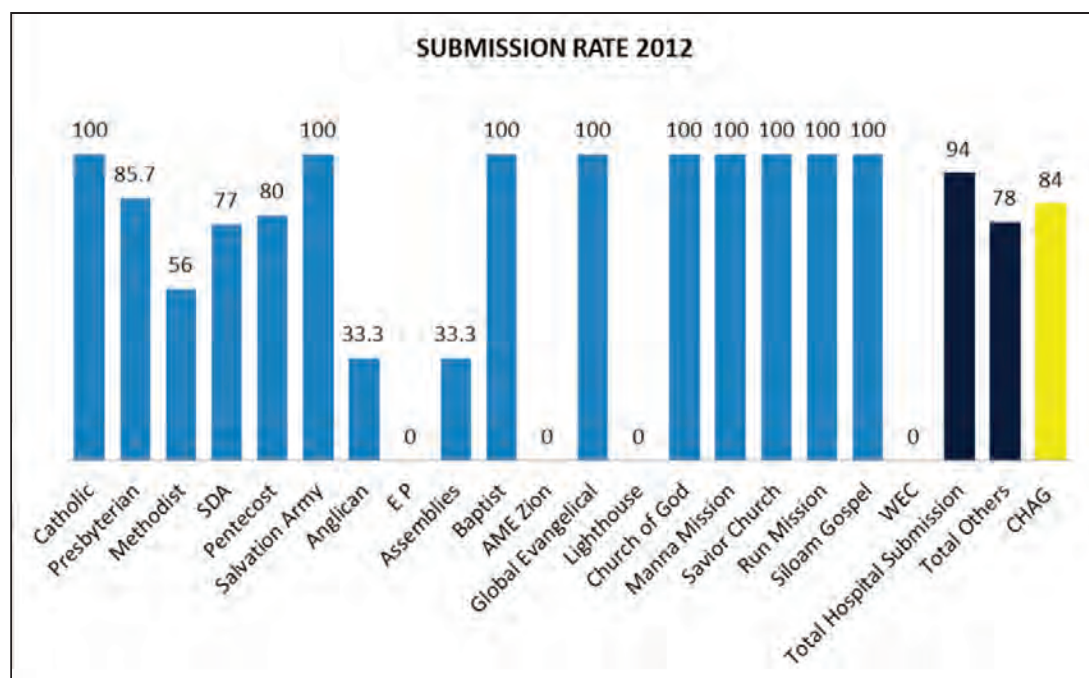
80% and 78% of institutions reported in 2010 and 2011 respectively as against 84% in 2012. The details are outlined in table 1.

Table 1: Submission Rate by Facilities 2012

Facility Type	2010			2011			2012		
	R	E	RR	R	E	RR	R	E	RR
Hospital	47	58	81%	56	58	97%	52	58	90%
Others	91	114	80%	79	114	69%	92	114	81%
Total	138	172	80%	135	172	78%	144	172	84%

R: Received, E: Expected, RR: Response Rate

Figure 1: Percentage Submission Rate by Facilities, 2012



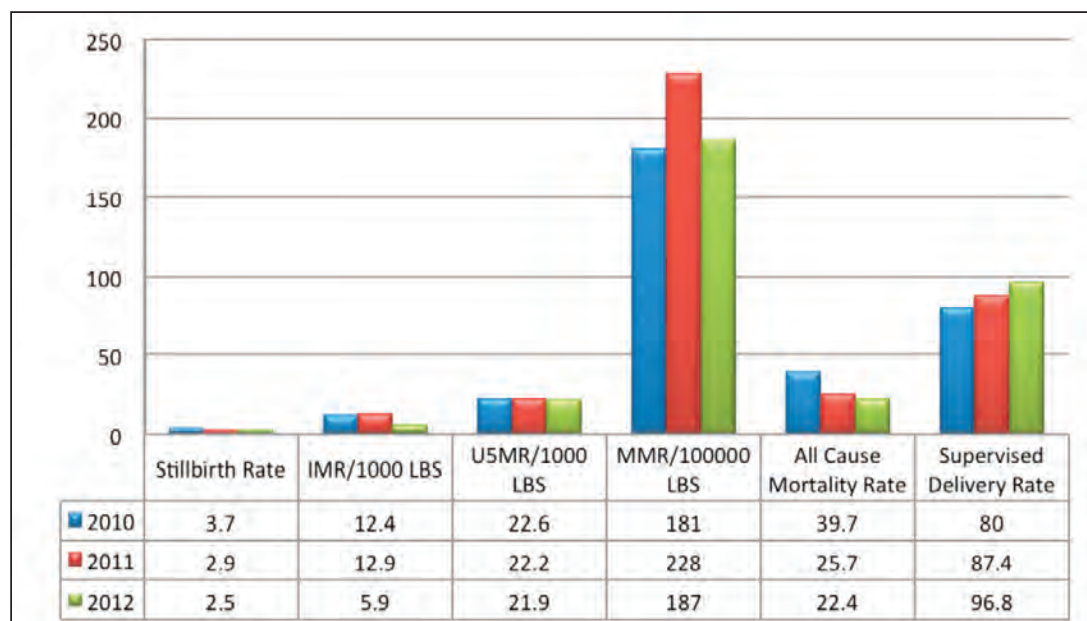
2. Health Outcome Indicators

There has been continues improvement in almost all indicators in the year under review. The figures below depicts further in detail per facilities reporting.

Table 2: SELECTED HEALTH OUTCOME INDICATORS

Health Indicator (Rate)	2010	2011	2012	3-Yr Trend	+/- (%)
Maternal Mortality	181	254.3	187	Stabilizing	- 3.3
Infant Mortality	12.4	12.9	5.9	Improved	+52
Under 5 Mortality	22.6	22.2	21.9	Stabilizing	+4.5
Fresh Still Births	3.7	2.9	2.5	Improved	+32
Crude Death Rate	39.7	25.7	22.4	Improved	+43

Figure 2: PERFORMANCE IN SELECTED HEALTH INDICATORS



Detail institutional performance on the above indicators follows. All facilities with figures above the red line are above the national average. These institutions should make particular effort to identify the reasons for their performance and design appropriate interventions to improve. Those below the red line should ensure they maintain or better their performance. Institutions are encouraged to establish inter-institutional partnerships to learn from each other as a means to accelerate improved care and achievement of better performance.

2.1 Institutional Maternal Mortality

Figure 3: Institutional Maternal Mortality per 100000 Populations in Various Hospitals

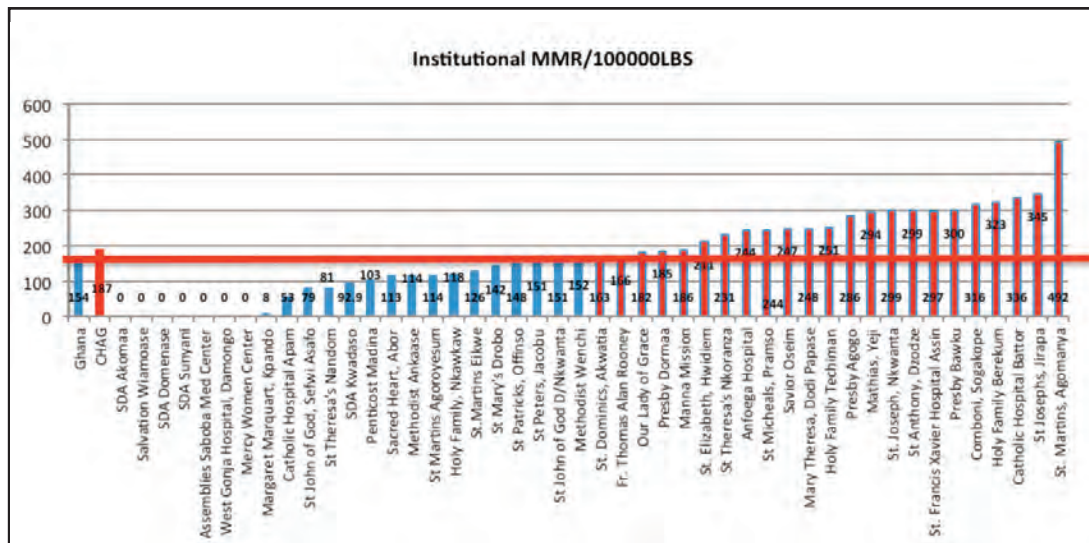


Table 3: Descriptive Statistics on Institutional Maternal Mortality Rate

	2011	2012	+/- (%)
Total Number of Hospitals reporting	43	46	+5
Percentage of Hospitals reporting	74	79	+5
Lowest	0/100000 Live Births	0/100000 Live Births	0
Highest	1074/100000	492/100000	+37
National	173/100000	154/100000	+6
CHAG	228/100000	187/100000	+10%
Facilities Equal to or Less than	42%	55.3%	+13+/- (%)
National IMMR			

• +/- (%) Indicates a positive or negative performance during the year under review

There has been improvement in maternal health. 50% of reporting facilities achieved below the national average of 154/100000 live births, a better performance in achieving the millennium development goal.

2.2 Institutional Infant Mortality

Figure 4: Institutional Infant Mortality Rate

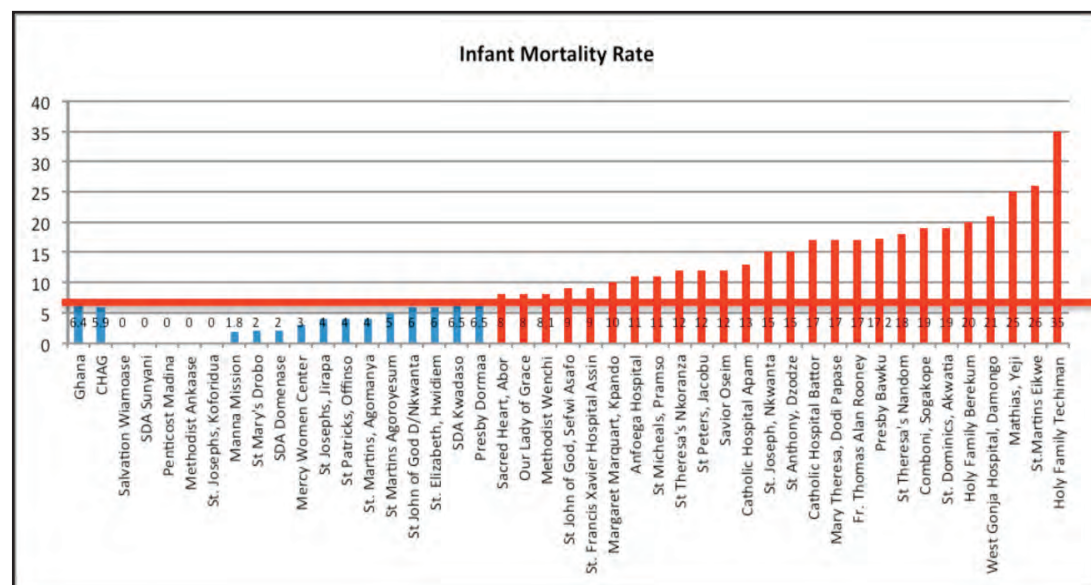


Table 4: Descriptive Statistics on Institutional Infant Mortality (IIMR)

	2011	2012	+/- (%)
Total Number of Hospitals Reporting	43	47	+5
Percentage of Hospitals reporting	74%	81%	+5
Lowest	0/1000 Live Births	0/1000 Live Births	0
Highest	49/1000	35/1000	+17
National	17.6/1000	6.4/ 1000	+46
CHAG	12.9/1000	5.9/1000	+36
% Facilities Equal to or Less than National IIMR	74%	40%	-30

CHAG hospitals showed a considerable improved IMR compared to the National average. In all, facilities in CHAG halved the percentage rise in infant mortality from 12.4% in 2011 to 5.9% in 2012.

2.4 Institutional Under-Five Mortality Rate

Figure 6: Institutional Under Five Mortality Rate

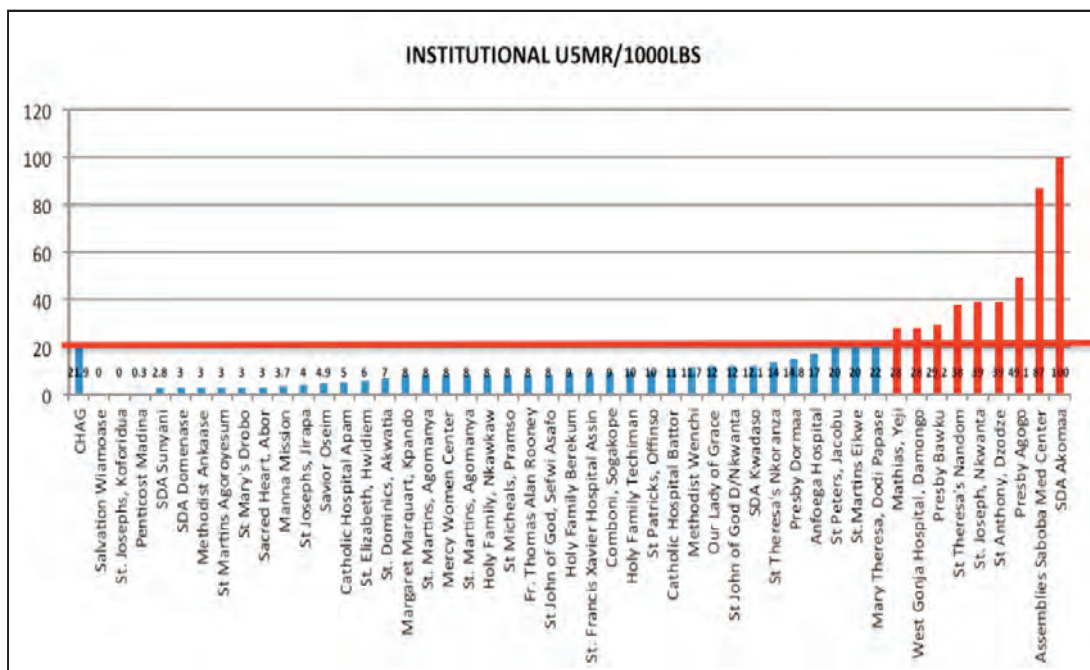


Table 6: Descriptive Statistics on Institutional Under Five Mortality Rate (IU5MR)

	2011	2012	+/- (%)
Total Number of Hospitals Reporting	43	47	+5
Percentage of Hospitals Reporting	74%	81%	+5
Lowest	0/1000 Live Births	0/1000 Live Births	0
Highest	46/1000	100/1000	-38
National	31/1000	24/1000	+14
CHAG	22.2/1000	21/1000	+2
% Facilities Equal to or Less than National Average	88%	83%	-5

Under Five Mortality rate (U5MR) showed a stable trend over the years. CHAG performance showed relatively better performance compared to the national rate.

2.5 Institutional Crude Death Rate

Figure 7: Institutional Crude Death Rate

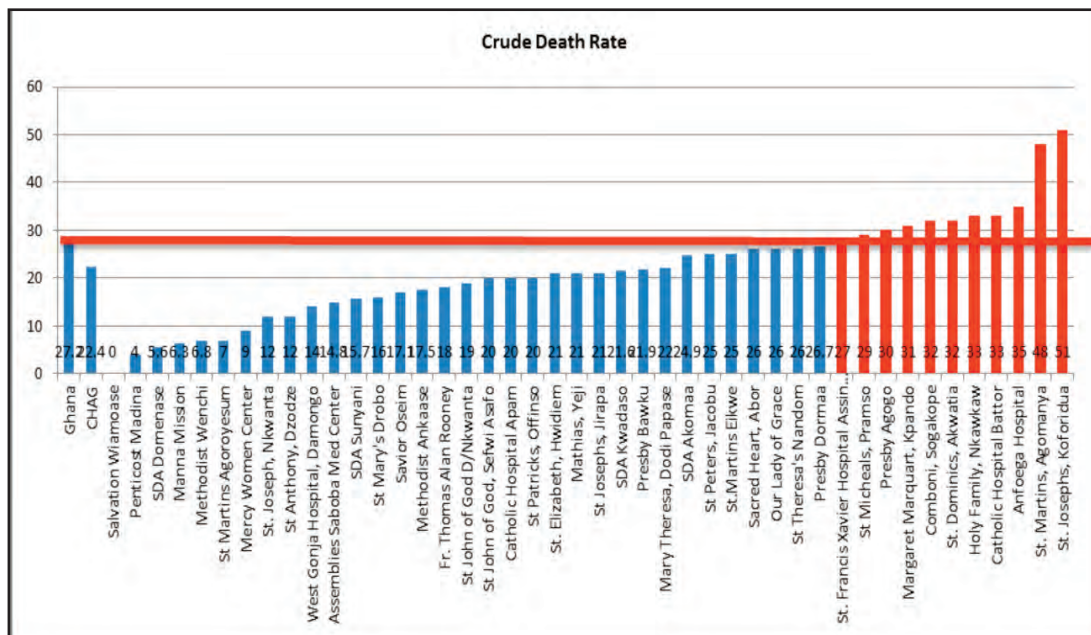


Table 7: Descriptive Statistics of Institutional Cause Mortality Rate

	2011	2012	+/- (%)
Total Number of Hospitals Reporting	43	47	+5
Percentage of Hospitals Reporting	74%	81%	+5
Lowest	7	4	+26
Highest	56	51	+4
National	25.7	27	-2
CHAG	23.2	22.4	+2
% Facilities Equal to or Less than National IDR	64%	70%	-6

The average institutional death rate for CHAG was 22.4/1,000 well below the National average of 27 per 1,000. Some facilities scored higher than the National average with 2 outliers of 50 per 1,000 admissions.

Health Training Institutions Pass Rate

Figure 8: Pass Rate of Health Training Schools

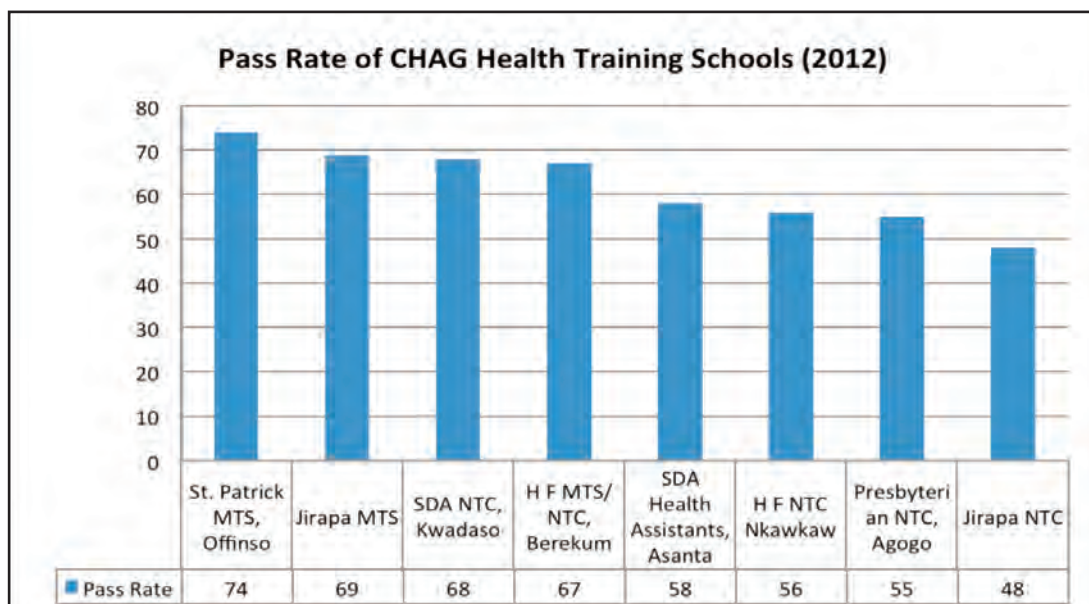


Table 8: Pass Rate of Health Training Schools

	2010	2011	2012
Total Number of facilities	6	8	8
Lowest Pass Rate	36%	31%	48%
Highest Pass Rate	73%	95%	74%
CHAG	49%	62%	61%
% Facilities Equal to or Less than National Average	33%	38%	50%

There was a slight drop in the total number of students qualifying as nurses in 2012 with 61% relative to 2011 with a 62% pass. This was however not very significant compared to 2010 with a 49% of students passing. St. Patrick's MTS, Offinso recorded a high pass rate of 74%, whereas SDA NTC and Jirapa MTS improved significantly from 31% and 35% in 2011 to 68% and 69% in 2012 respectively.





Christian Health Association of Ghana
21, Jubilee Well Street, Labone
P.O. Box AN 7316, Accra
Phone: 030 277 7815 • Fax: 030 277 2226
Email: chagghana@yahoo.com • chag@chagghana.org
Web: www.chagghana.org